



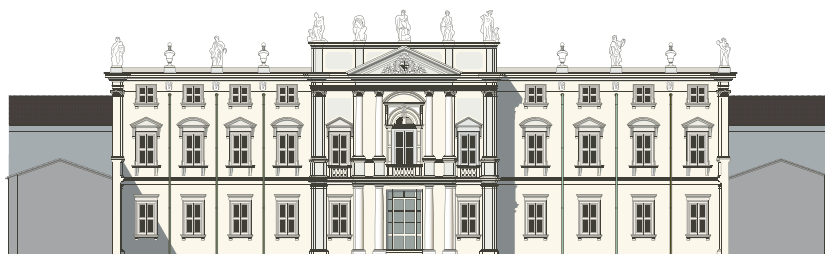
VILLA MOSCONI BERTANI

1735

ARBIZZANO DI NEGRAR - VERONA - ITALIA



GUIDED TOURS · WINE TASTINGS · CUISINE · EVENTS
ROOM PLANS



THE VILLA

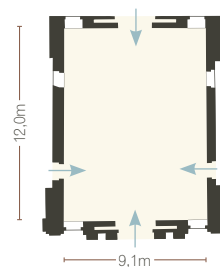
- A** Chamber of the Muses 100 PAX/109m²
- B** Lounge 5 PAX/20m²
- C** Hall of the 7 Springs 30 PAX/44m²
- D** The Mirror Room 30 PAX/44m²
- E** The 'Pieve' Room 40 PAX/40m²
- F** 'Antica Cucina' 30 PAX/47m²
- G** Conference Room 50 PAX/65m²
- H** San Gaetano Chapel 70 PAX/60m²
- I** 'Antica tinaia' 160 PAX/167m²
- J** Catering kitchen
- K** Coat room
- L** Shop
- M** Front garden
- WC



CHAMBER OF THE MUSES

The main hall of the villa —beautifully frescoed in the 18th century with allegorical motifs inspired by the muses of arts and sciences— was conceived to entertain guests with Baroque music concerts, theater and literary salons in the evenings. It grants access to both the front garden and the Romantic garden, coffee house, and lake.

With Wi-Fi access and an audio system for music and conferences. Video projector, wireless printers and other technical services are available upon request.



DIMENSIONS

Surface Area..... 109m²
W x L 9,1m x 12,0m
Height..... 10,3m



CAPACITY



135



100



36



75



31



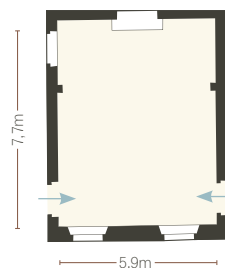
36



HALL OF THE 7 SPRINGS

An intimate room with a working fireplace. It was originally used as a sitting room for guests. The name originates from the seven springs that flow from the valley, feeding the Roman-era aqueduct of Verona.

It is equipped with Wi-Fi, audio system for music and conferences. Video projector, wireless printers and other technical services are available upon request.



DIMENSIONS

Surface Area.....44m²
W x L5,9m x 7,7m
Height.....3,8m



CAPACITY



40



30



12



23



10



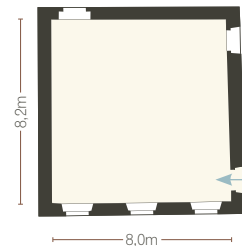
12



'ACINATICO' CONFERENCE ROOM

The historic meeting room of the Bertani family, elegantly furnished with a banquet table, chairs and 19th-century furniture.

Equipped with Wi-Fi, audio conference system and 50" HD monitor. Wireless printers and other technical services are available upon request.



DIMENSIONS

Surface Area.....65m²
W x L 8,0m x 8,2m
Height.....3,7m



CAPACITY



54



40



15



30



12



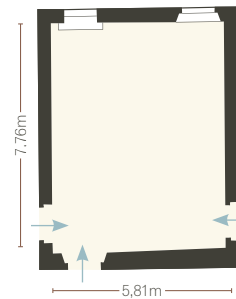
15



MIRROR ROOM

A tasteful room adorned with decorative 19th-century plasterwork and mirrors. It offers direct access to the gardens, ideal for an outdoor coffee break.

Equipped with Wi-Fi and an audio system for both music and conferences. Video projector, wireless printer and other technical services are available upon request.



DIMENSIONS

Surface Area.....44m²
W x L5,81m x 7,76m
Height.....3,81m



CAPACITY



40



30



12



23



10



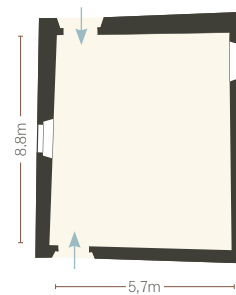
12



'PIEVE' ROOM

An elegant room decorated with a private collection of paintings by contemporary artist, Ciferri. It is adjacent to the 'Antica Cucina' and ideal for business meetings.

Equipped with Wi-Fi. Audio conference system, 50" HD monitor, wireless printers and other technical services are available upon request.



DIMENSIONS

Surface Area.....40m²
W x L 5,7m x 6,8m
Height..... 4,18m



CAPACITY



54



40



15



30



12



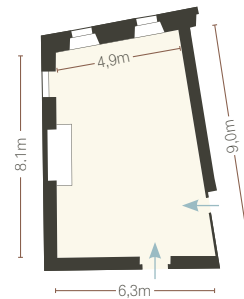
15



'ANTICA CUCINA'

The 'Antica Cucina' is one of the oldest sections of the villa, dating back to the 16th century. A large room decorated with etchings and hunting trophies, featuring a stately central hearth. Ideal for formal seated dinners, buffet luncheons and coffee breaks.

It is adjacent to the service kitchen and is equipped with Wi-Fi and a sound system. Video projector, wireless printer and other technical services are available upon request.



DIMENSIONS

Surface Area.....47m²
W x L 8,4m x 5,6m
Height..... 5,88m



CAPACITY



40



30



12



23



10



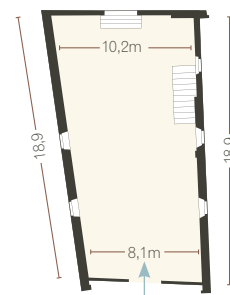
12



'ANTICA TINAIA'

For centuries, the great wines of the Estate fermented in this room, including the very first Amarone. Today it is a large, comfortable space, ideal for conferences, fashion shows, dinners and dancing. Positioned directly above the historic wine cellar, guests can easily take an additional tour and tasting.

Equipped with Wi-Fi and audio conference system. Video projectors, lighting systems, simultaneous translation, video recording and other technical services available upon request.



DIMENSIONS

Surface Area..... **167m²**
W x L **9,0m x 19,0m**
Height..... **4,18m**



CAPACITY



215



160



58



180



50



82

ADDITIONAL ROOMS



SAN GAETANO CHURCH

This picturesque chapel with its bell-tower is perfectly built into the estate complex and seats up to seventy people.



DIMENSIONS

Surface Area.....66m²
Seats.....70 PEOPLE



THE HISTORIC CELLARS

The estate was first established for the production of fine wine and today this remains its primary purpose. On request, tastings may be arranged in the historic cellars which have witnessed centuries of harvests of the Valpolicella grape and where Amarone wine was first produced.



THE ESTATE & GROUNDS

- A Secret Garden
- B Entrance to lake and park
- C Lake
- D Coffee house
- E Front Garden and Villa complex